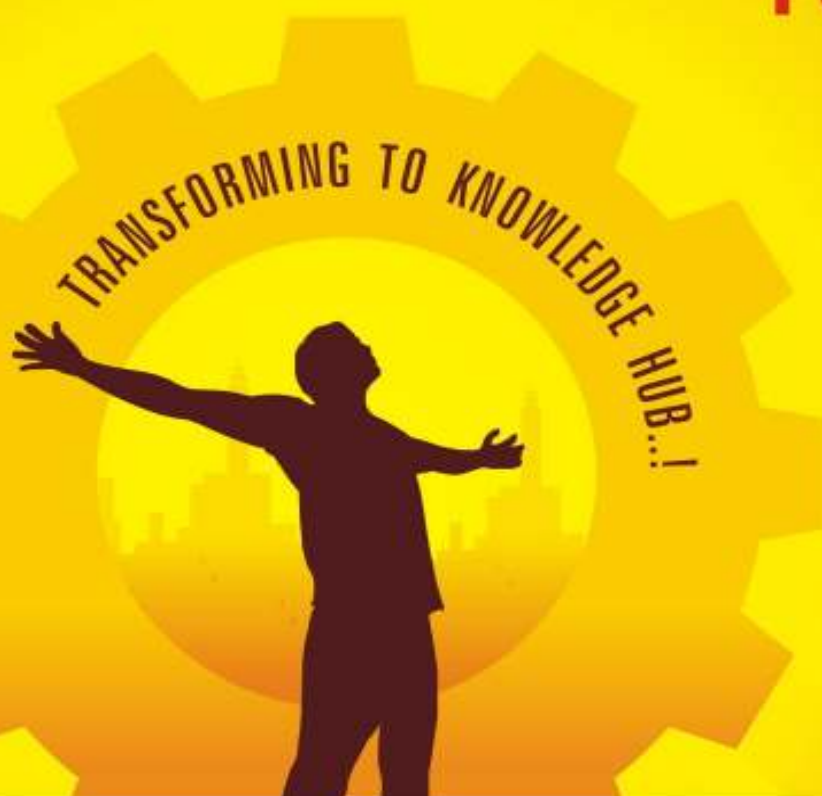




LATTHE EDUCATION SOCIETY'S

POLYTECHNIC

JAIN MINORITY INSTITUTE



Diploma in Civil, Computer, Electrical, Electronics & Telecommunication, Mechanical Engineering



■ Diploma in
Civil Engineering

■ Diploma in
Computer Engineering

■ Diploma in
Electrical Engineering

■ Diploma in
Electronics & Tele. Engineering

■ Diploma in
Mechanical Engineering

Our Inspiration



Late Shri. Annasaheb Latthe

Our Motivation



Hon'. Kallappa Anna Awade Ex. MP
President, Governing Council L. E. Society, Sangli

R E S U L T S

DISCIPLINE	2009-10
CIVIL ENGINEERING	81%
COMPUTER ENGINEERING	94%
ELECTRICAL ENGINEERING	93%
MECHANICAL ENGINEERING	93%

Our renowned recruiters



Best Student of the year Award



Best Sportsman of the year Award



Best Sportswoman of the year Award



A Word from Honorary Secretary

Dear Students,

It gives me immense pleasure to introduce our L. E. S. family to all the aspirants of engineering. Latthe Education Society principally works on three basic principals of Jainism. ॥ सम्यग्दर्शन, ज्ञान, चरित्र ॥

It translates as rational, logical thinking and sublime character. Our aim is to inspire and support all the initiatives taken for the betterment of the students. I am sure that the students will feel happy and satisfied by the encouraging educational environment in our Polytechnic.

Regards,

Prin. V. T. Cougule

Honorary Secretary, L. E. Society, Sangli.



From Principal's Desk...

Dear Students,

I am honored to share with you all our goals and objectives. Our Polytechnic aims at developing not only highly-trained human capital but also responsible citizens. Our aim is to achieve total quality assurance so that the students and parents get the maximum benefit.

The enviable campus highly qualified and dedicated faculty, well equipped laboratories, departmental and central library as well high speed internet, motivating educational atmosphere in our institute are our assets. We all technocrats committed to realize the vision of our former president Hon' Dr. A. P. J. Abdul Kalam of transforming India into a developed nation by 2020 and marketing it energy independent by 2030.

We welcome all your suggestions for maintaining quality.

Thank you,

Regards,

Shri. S. A. Khot.

Principal



Introduction

Latthe Education Society's is established in the memory of Divan Bhaddar Late Shri, Annasaheb Latthe, the then Financial Minister, Mumbai state in 1951. It strives hard for the welfare and development of Jain Samaj for the last sixty years. As a result, it has been declared by State Government as Jain minority institute in 2004. We are committed to attain excellence in imparting quality Education.

Latthe Education Society's Polytechnic is established in June 1983, with three courses namely Diploma in Civil, Electrical and Mechanical Engineering. The institute has started offering Diploma in computer Engineering since 2001-2002. A Diploma in Electronics Telecommunication is introduced from academic year 2008-2009. The institute has made a remarkable progress and has emerged as one of the leading Polytechnics in Maharashtra.

Vision

Latthe Polytechnic wishes to be an institute of National reputation by imparting sound technical knowledge and value-based education so as to empower all the stakeholders.

Quality Policy

- To accomplish our VISION, we all at L E S's Polytechnic are committed to:
- Utmost care of students
- Quality Consciousness
- Inculcation of ethical values
- Liaison with community and Industry

Features

- Tradition of Excellent results with students constantly in State Merit list.
- Highly qualified, well experienced and dedicated faculty.
- Rich and enviable infrastructure with total built up area of about 1,35,000 sq.ft.
- Well equipped & well furnished modern laboratories with state of art CNC machines.
- Dedicated Training & Placement cell constantly in touch with global needs of recruiters.
- Advanced computers with latest configuration with High speed Broadband Internet facility.
- Ultra Modern testing, consultancy and Energy Audit Cell.
- Maximum number of students participation and winners in National & State level competitions, like Dipex, Habitat, Vision, MODRAW and ASCENT.
- Consistency of winning in Zonal and State level sports.
- Well furnished Library with 3000 sq.ft. area full fledged with advanced books and Journals.
- Spacious Hostels for Boys & Girls.
- Special efforts for all-round development of Economically Backward and Meritorious Students.
- All freeships and Scholarships are applicable as per Govt. rules.



Admission to post SSC Diploma Courses in Engineering

51% Seats
reserved
for
Jain Minority
candidates



Eligibility Criteria

1) Admission to the first year of post SSC Diploma Courses in Engineering / Technology

To be eligible Candidate should be an Indian National and should have passed the SSC (Std.X) examination of Maharashtra State Board of Secondary and Higher Secondary Education or its equivalent examination with minimum 50% marks in Best of 5 aggregate (minimum 45% marks in Best of 5 aggregate in case of candidates of Backward class categories valid and recognised in the Maharashtra State) with and in subjects Mathematics, General Science and English. For State Board Candidates who have passed Maths (Code 71) and Science & Technology (Code 72) are only eligible for admission. In case of ICSE & CBSE boards, candidate passed with Science and mathematics is eligible for admission.

2) Direct admission to the Second Year of Post SSC full Time Diploma Courses

10% seats of the sanctioned intake are available as over and above the sanctioned intake in all the Polytechnics / institutes in state for direct admission to the Second Year of Post SSC full Time Diploma Courses. The required educational qualification for the additional seats is either H.S.C (Technical / vocational) of Maharashtra State Board of Secondary and Higher Secondary Education with minimum 50% marks in aggregate (45% marks in aggregate in case of Backward Class category candidates) or I.T.I with minimum 60% marks or H.S.C (M.C.V.C) with minimum 60% marks. Admission Procedure is as per DTE, Mumbai guidelines and schedule.

Undertaking :

All candidates who have applied for admission have to submit the undertaking prescribed by DTE Mumbai from time to time.

Cancellation of admission and Refund of fees:

Refund of tuition fee, development and other fees after cancellation of admission, shall be as per Govt. rules.

Any amendments/Acts/Judgments which may be published by Government/ Hon. Courts of India from time to time will be applicable to Candidates and Institutes covered under these rules of admission.

Action against ragging:

Strict action will be taken against ragging as per provision of Maharashtra Prohibition of Ragging Act 1999 which is in effect from 15th May 1999



From Chairman's Desk...

Dear Students,

I feel very much pleased to welcome all the aspiring and ambitious students. Latthe Education Society Sangli is running with 40 different institutes with above 25000+ students in the state of Maharashtra and Karnataka. Our "Polytechnic" is established in June 1983. Most of our students belong to rural area, so there is a tremendous need of rigorous efforts for their upliftment. Learning has its own rewards, although many brilliant students remain away from the scene just because they could not afford technical education.

Our institute has taken an initiative to adopt such talented, hard working but economically backward and deprived students by founding "Zero to Hero" scheme. We are proud to announce that under this scheme several students receive the benefit of free books, notebooks, concession in fees and educational instruments. Finally, I extend my best wishes to the team of LESP faculty and staff.

Thank you,
Regards,

Hon. Shri. Suresh Patil
Ex. Mayor, Sangli.
Chairman, L. E. Society, Sangli.



Library Full Fledged with Advanced Books & Journals



Spacious Hostel Facility for Girls.



Spacious Hostel Facility for Boys.

Amenities



Our Renowned Recruiters

Larsen & Toubro Limited
 Thermax Limited
 Eaton Fluid Power Ltd.
 Wipro GE Healthcare,
 Regen PowerTech P Ltd.
 Mahindra & Mahindra Ltd.
 IVRCL Infrastructure & Projects Ltd.
 Godrej & Boyce Mfg.Co. Ltd.
 Bajaj Auto Ltd.
 John Deere Equipment P Ltd.
 Supreme Petrochem Ltd.
 AAM Services I P Ltd.
 L& T Heavy Engg. Div
 Jeevan Jyoti Constructions P Ltd.
 Tejus Construction &
 Infrastructure P Ltd.
 Lucas TVS Ltd.
 Flash Electronics (I) P Ltd
 Tata Motors Ltd.
 Bharat Forge Ltd.
 Ever Electronics

TRAINING AND PLACEMENT CELL

Our institute strongly supports exposure to the growing industrial needs and technological innovations. Expert lectures, Workshops, Seminars based on new trends in Engineering and Technology are continuously organized by the Student Associations and the concerned faculty of the department from time to time.

A "Training and Placement Cell" and a full-time faculty is available to look after all the activities. The cell provides an excellent Corporate Interface by arranging interactive sessions with the industry such as Synergy 2K10. It functions effectively with all audio-visual facilities for Paper-Presentations, Written Tests, Group Discussions and Interviews



Company Presentation



Written Test



Interview



Activities



Parents' Meet



Zonal Sports: Kho-Kho



Lathe Winners: Ladies Inter-Zonal Tournament



Annual Social Gathering: Solo Dance



Synergy : Industry-Institute Partnership Programme



POLYTECHNIC



॥ परस्परप्रेमप्रहो जीवानाम् ॥

is accepted as motto of Jainism.
paraspara (mutual), upagraha
(assistance) and jiva (living beings).
It stresses the philosophy of
non-violence and ecological
harmony on which the Jain
ethics and doctrines are based.

LATTHE EDUCATION SOCIETY, SANGLI MANAGING COUNCIL (2007-2012)

1	Shri. Suresh Adgonda Patil Uday Colony, Neminathnagar, Sangli	Chairman	12	Shri. Ravsaheb Annasaheb Patil At. Post. Borgaon, Tal. Chikodi, Dist. Belgaum	Member
2	Adv. Shri. P. R. Patil 'Vitrug Bung' Himmat Bahadur Parisar, Tarabai park, Kolhapur	Vice-Chairman	13	Smt. Anupama Ashokrao Mule 'Anuraj' Plot No.26/B, Chintaminagar, Sangli	Member
3	Prin. Shri.Vijaykumar Tatoba Chougule Near Narayan Hospital, Miraj Road, Vishrambag-Sangli	Hon. Secretary	14	Shri. Appaso Annaso Masule Librarian, Smt. Kasturbai Walchand College, Sangli	Member
4	Adv. Shri. Vijaykumar Shridhar Sakale 'Sundar-Shridhar' Spurti Estate, Patrakarnagar, Sangli	Treasurer	15	Shri. Rajgonda Annaso patil Kalpvaksh Narsari, Kupwad, Dist. Sangli	Member
5	Shri. Kallappa Baburao Awade 'Indu-kala' Awadenagar, Ichalkaranji	Member	16	Shri. Shrenik Dhanpal Patil Pujari Plot No. 17, Vishrambag-Sangli	Member
6	Adv. Shri S. S. Patil 16, Shivajinagar, Sangli	Member	17	Shri. Prakash Dhanpal Zele Azad Road, Jaysingpur, Tal.Shirol, Dist. Kolhapur	Member
7	Prof. Shri. Sharad Ramgonda Patil At. Post. Kupwad, Tal. Miraj, Dist. Sangli	Member	18	Shri. Ashok Baburao Sakale At. Post. Nandre, Tal. Miraj, Dist. Sangli	Member
8	Shri. Suhas Bapusaheb Patil 361/2, Plot No. 5, Vishrambag-Sangli	Member	19	Dr. Shri. Vasant Baburao Kodag Prin. Smt. G.K. Ghodawat Kanya Mahavidyalaya, Jaysingpur.	Member
9	Shri. Shrikant Keshavrao Chougule 27, Shivajinagar, Sangli	Member	20	Principal, Shri. N.D. Patil Night College, Sangli.	Member
10	Shri. Ashok Annasaheb Patil 111, Mahavirnagar, Sangli	Member	21	Head Master, Sangli Highschool, Sangli.	Member
11	Shri. Ravsaheb Jingonda Patil 'Sagar' Medico, Civil Hospital Road, Sangli	Member			



CESA Inauguration: Dr. Ravindra Shisave, S.P. Sangli.



MESA Inauguration: Mr. Nikesh Khatmode-Patil, Dy.S.P. Sangli with Hon. B. K. Patil, Renowned Entrepreneur.



COMPESA Inauguration:
Hon. Nitin Savgave, Mayor, S.M.K. Sangli



Kabbaddi: Ladies Inter-Zonal Sports



Hon. P.V.S. Nageshwara Rao, Vice-President Thyssenkrupp Industries and Dignitaries
Annual Prize Distribution

DEPARTMENT OF CIVIL ENGINEERING

The department of Civil Engineering is established in 1983. It has long tradition of versatile and extra-ordinary students. Shri. Shashikant Nandkishor Sarada passed out in 1996-97 has completed his B.E. from V.J.T.I. Mumbai, M.Tech from I.I.T. Powai and is working in Texas, United States. Students especially from the rural areas having low percentage at entry level, come out with spectacular results. To expose our students to the industrial needs, department organizes lectures, workshops, seminars of industrialists and experts from various fields.

SALIENT FEATURES

- Highly qualified, well experienced and dedicated faculty
- Departmental Library facility.
- Provides consultancy service to government projects like Bharat Nirman and Jal Swaraj as well as consultancy to various industries.
- Computerized material testing facility.
- Student Participations and winners in National and State level competitions like Dipex, Habitat, Vision, MODRAW, ASCENT etc.



CONCRETE TECHNOLOGY LAB

- 200T computerized compression Testing Machine.
- Deval's abrasion testing machine.
- Impact value testing of aggregate machine.

MATERIAL TESTING LAB

- Computerized Universal Testing Machine (40 T).
- Impact testing machine.
- Hardness testing machine.
- Abrasion testing machine for the tiles.

Placements in :

Larsen & Toubro Limited
IVRCL Infrastructure & Projects Ltd.
Jeevan Jyoti Constructions Pvt. Ltd.
Tejus Construction &
Infrastructure Pvt. Ltd.



SURVEYING LAB

- Total Station (Pentax)
- Digital Planimeter
- Transit Theodolite (20")
- Auto level ■ Dumpy level
- Prismatic Compass ■ Optical square

GEOTECHNICAL LAB

- Direct shear test apparatus
- CBR test apparatus
- Vane Shear apparatus
- Permeability test apparatus

ENGINEERING MECHANICS LAB

- Double purchase crab
- Friction apparatus
- Beam apparatus
- Universal force table
- Jib crane
- Worm & Worm wheel

MECHANICS OF STRUCTURES LAB

- Computerized Universal Testing Machine
- Impact Testing Machine
- Hardness Testing Machine
- Abrasion Testing Machine for tiles

CIVIL ENGG. MODEL ROOM

- Different types of pipe materials
- Various types of building flooring materials
- Model of Raft footing Reinforcement
- Model of small Building
- Model of Bridge without column.

HYDRAULIC LAB

- Reynold's Apparatus.
- Bernoulli's Theorem Apparatus
- Friction factor Apparatus.
- Currentmeter.
- Venturimeter

ENVIRONMENTAL ENGINEERING LAB

- BOD & COD testing apparatus
- Digital spectrophotometer
- Residual chloride test kit.
- Chemical Hardness Test.
- Turbidity, Electrical conductivity meter.





DEPARTMENT OF COMPUTER ENGINEERING

The institute has started offering Diploma in Computer engineering from academic year 2001-02. The infrastructure is upgraded keeping in view the growing needs of computerization and automation scenario. The major equipments in the department comprises of branded P4 machines of latest configuration, different types of printers, scanners, webcam, switches, routers, laptop, LCD projectors, microprocessor kits along with licensed copies of advanced softwares like Office xp, Office 2007, Windows Server 2003, Windows Vista, MS- visual studio with .net, turbo C++.

The ratio of number of computers and students is 1:1 which is essential for performing practicals and surfing internet for e-resources.

SALIENT FEATURES

- Well qualified and dedicated faculty
- Departmental library
- Involvement of faculty website development.
- Branded P4 of latest configuration with major essential peripherals
- Advanced licensed softwares
- High speed internet facility
- Wide provision of e-learning resources
- Successful organization of workshops, seminars, visits, quiz contests, programming contests

HARDWARE LAB

The lab comprises different hardware components which provide detailed study material to the students.

NETWORK / INTERNET LAB

It is well-equipped with TCP/IP programming, Web technologies like ASP, ASP .NET Network administration Novel Netware, etc.



Placements in :

Tata Consultancy Services
Wipro GE Healthcare.
CMC Ltd.
HCL Technology
Satyam Mahindra Ltd.
Tech Mahindra Ltd.



PROGRAMMING LAB

It is equipped with software development tools like Borland C, Visual Studio, net, Java, and C++ important for various applications.

MICROPROCESSOR LAB

This lab comprises of 8085 microprocessor and peripheral kits.

BASIC ELECTRONICS AND DIGITAL LAB

It is equipped with various basic electronics as well as digital trainer kits.

SOFTWARE TESTING LAB

It is essential for Education, Research and Development of software management. All necessary utilities required for software development and testing are available in this lab.



Placements in :

Larsen & Toubro Limited
Thermax Limited
Eaton Fluid Power Ltd.
Regen PowerTech Pvt. Ltd.
Mahindra & Mahindra Ltd.
Godrej & Boyce Mfg.Co. Ltd.
Bajaj Auto Ltd.
John Deere Equipment Pvt. Ltd.
AAM Services India Pvt. Ltd.
L& T Heavy Engg. Div
Spicer India Ltd.
Tata Motors Ltd.
Bharat Forge Ltd.
SKF India Ltd.



HYTECH ENGINEERING WORKSHOP

Latest CNC lathe and Mill trainer,
Shaping Machines, Bench Grinders,
Horizontal & Universal Milling
Machine, Radial drilling, Surface
grinder, Bar cutting and Welding
machine.

FLUID MECHANICS & MACHINES LAB

Venturimeter, Orificemeter, Bernoulli's
experiment, Centrifugal pump test rig,
Pelton wheel turbine, Francis turbine &
reciprocating pump test rig.

MEASUREMENT & CONTROL LAB

Stroboscope & inductive pick up,
Level measuring by capacitance
method, LVDT, Strain gauges
Rotameter & Load cell

HEAT TRANSFER LAB

Conduction: Thermal
conductivity of metal rod,
Radiation: Stefan Boltzman
Law, Solar water heating
system.

RAC LAB

Ice plant test rig,
Air conditioning test rig,
Working window
Air conditioning
Water cooler test rig.



POWER ENGINEERING

Working engine of 4-stroke
multi-cylinders petrol engine
Working engine of 4-stroke
diesel engine.

AUTOMOBILE ENGG. LAB

Working Model of clutch,
Gear boxes, Disc & Drum brakes
Suspension System
Battery Testing System



DEPARTMENT OF HUMANITY AND SCIENCE

The department of Humanity and Science includes core subjects of first year such as Applied Sciences, Basic Chemistry, Basic Physics, Mathematics, English and Communication Skills. The faculty of our department actively participates in academic development of newly admitted students in the Engineering and technological environment to prepare them for further technical education.

Our department continuously organizes different activities for personality development such as spoken English, interview techniques, workshop and seminars. Study materials and textbooks are also published by our department.

SALIENT FEATURES

- Well experienced and dedicated faculty
- Departmental library
- Language Lab for the improvement of communication skills.
- Encouragement to students for participation in co-curricular & extra-curricular activities
- Efforts for all-round development of students



DEPARTMENT OF MECHANICAL ENGINEERING

The department of Mechanical Engineering founded in 1983. It has built reputation as most popular department in the region. The department has produced more than 1200 diploma students; many of them have illustrious records of achievements, and have assumed esteemed position in India and abroad.

Department is pioneer to establish CNC Machine as early as 1997. Now we have the pride to install latest CNC machine lab.

SALIENT FEATURES

- Well experienced and dedicated faculty.
- Well equipped and well furnished laboratories.
- Departmental library facility.
- Encouragement to students for participation in co-curricular & extra-curricular activities
- Efforts for all-round development of students

THEORY OF MACHINES LAB

Balancing of several masses rotating in a plane, Models of various braking mechanisms for two wheeler, Models of clutches. Working models of governor.

INDUSTRIAL HYDRAULICS & PNEUMATICS LAB

Pneumatic Trainer to study all types of Pneumatic valves for flow control, pressure control and direction control.

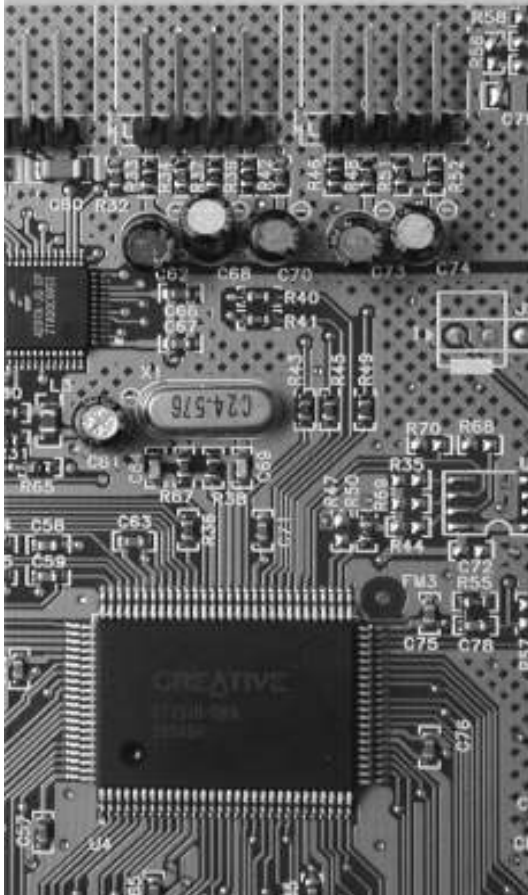
METROLOGY & QUALITY CONTROL LAB

Vernier Caliper, Micrometer Dial Indicator, Vernier Bevel Protractor, Sine Bar Radius Gauge & Filler Gauge,.



Placements in :

L& T Heavy Engg. Div
Wipro GE Healthcare,
Lucas TVS Ltd.
Flash Electronics (I) P Ltd
Ever Electronics
Bharat Sanchar Nigam Ltd.
Bharati Airtel Ltd.
Reliance Communication
Videocon Industris Ltd.
LG Electronics India Pvt. Ltd.



POWER & INSTRUMENTATION LAB

This laboratory comprises of various educational kits, power supplies of various ranges, CROs, function generators, universal motor, meters with various ranges etc.

DIGITAL & MICROPROCESSOR LAB

This laboratory is equipped with various regulated power supplies, digital IC trainers, digital IC testers, 8085 microprocessor kits etc.

COMMUNICATION LAB

This laboratory consists of digital storage oscilloscope, R.F. signal generator, CROs, digital multimeters, LCR meter, pulse generator, function generators; DC regulated dual power supply, T.V. trainer, VCD player trainer, antenna trainer etc.



PCB LAB

This laboratory comprises of PCB drill machine, PCB assembly jig, etching machine etc.

DEPARTMENT OF ELECTRONICS AND TELECOMMUNICATION ENGINEERING

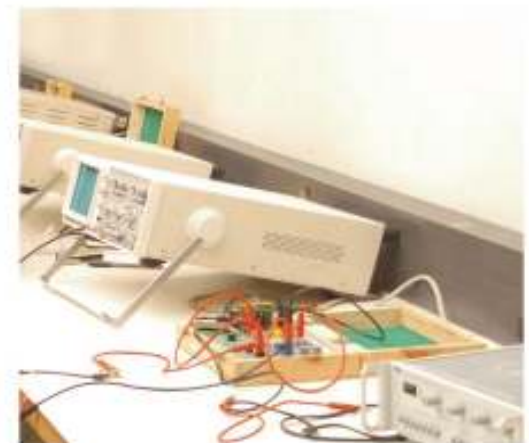
With the growing demand for telecommunication worldwide, the polytechnic has taken initiative to offer Diploma in Electronics and Telecommunication from the academic year 2008-09. The curriculum of this course lays greater emphasis on fundamental principles of Electronics and Communication Engineering. Along with the regular Engineering curriculum, the department strives to inculcate a professional attitude among the students. The training & education imparted by our faculty matches the requirements in industry and brings about all-round development of our students.

SALIENT FEATURES

- Excellent technical education with the help of well qualified and dedicated faculty members.
- Well equipped and modern laboratories
- Organization of activities like workshops, seminars, industrial visits, to enrich their knowledge with the latest advancements.
- Encouragement to students for participation in co-curricular & extra-curricular activities
- Efforts for all-round development of students

BASIC ELECTRONICS LAB

This laboratory is equipped with various educational kits, regulated power supplies of various ranges, digital multimeters, LCR meter, pulse generator, CROs, meters with various ranges etc.



Placements in :

Larsen & Toubro Limited
Thermax Limited
Eaton Fluid Power Ltd.
Regen PowerTech P Ltd.
Mahindra & Mahindra Ltd.
Godrej & Boyce Mfg.Co. Ltd.
Supreme Petrochem Ltd.
Tata Motors Ltd.
Bharat Forge Ltd.
Cummins India Ltd
ITC India Ltd.



BASIC ELECTRICAL ENGINEERING LAB

This Lab is exclusively used for practicals of First year students. The lab has all the resources which give keen insight in the field of electrical engineering.

ELECTRICAL MEASUREMENT LAB

Watt meter, Ammeter, Voltmeter, Digital Voltmeter, AC & DC bridges. Latest Power Analyzer for testing and Calibration of harmonics analysis and power quality.



REPAIR AND MAINTENANCE LAB

This lab has various equipments used in domestic and commercial fields. This will enable for self- entrepreneurship & can offer job opportunities as Sales & Service Engineer.

POWER ELECTRONICS LAB

It is well equipped with SCR, Triac, DiAC & its characteristics and also with Power Electronic circuits like controlled rectifier, ac voltage controller and dc chopper.



DEPARTMENT OF ELECTRICAL ENGINEERING

The department of Electrical Engineering is established in 1983. It has nurtured a long and prosperous tradition of meritorious students. Shri. Shashank Kulkarni is now Design Engineer of Bharat Bijlee, Mumbai. Shri. Nilesh Salunkhe passed out in 2001, has soon joined Black & Veatch, Pune as an Electrical Designer. The department has proposed to develop "Energy Park" under the guidelines and financial support of Ministry of New & Renewable energy sources New Delhi.

SALIENT FEATURES

- Highly qualified, well experienced and dedicated faculty
- Departmental Library facility
- Electrical consultancy and cell department
- Energy Audit for external Agency
- Organization of Paper presentation, Seminar workshop.
- Well equipped and well furnished laboratories
- Energy park in progress

ELECTRICAL MACHINES LAB

This lab is equipped with DC Motors, Induction Motors, Synchronous Motors and Motor Generator sets. This lab has all the metering and performance monitoring equipments which enable the students to test and study the machine characteristics. All these machines are purchased from standard manufacturers and are of industry standard.



OUR FACULTY



POLYTECHNIC



Shri Khot S. A. Principal

M.E.(Mech.Engg.) MIE Ph. D. (Pursuing)
Certified Energy Auditor Govt. of India.
Experience: 22 years

Name of the Faculty	Experience	Name of the Faculty	Experience	Name of the Faculty	Experience
Mr. Gaji A. B. M. E. Structural Engg. H. O. D. Civil Engineering	20	Mrs. Chavan S. M. M. A. (English) M.B.A.	16	Ms. Manjarekar A. S. M. E. Construction Management	1
Mrs. Mulay P. D. M.E. (Electrical) H. O. D. Electrical Engineering	17	Mr. Rupnar P M. M.Tech (Pursuing)	7	Ms. Magdum M. M. B.E. E & Tc	3
Mrs. Ranade M. S. M.E. Electrical Engineering I/C. H. O. D. Computer & Electronics & Telecom. Engg.	25	Mr. Patil S. S. M. E. Environmental Engg.	4	Ms. Patil T. A. B. E. Computer	2
Mr. Patil S. J. I/C. H. O. D. Mechanical Engineering M.E. (Persuing)	20	Mr. Patil R. S. B.E.	3	Ms. Patil S. G. B. E. Computer	2
Mr. Vaswade G. D. H. O. D. Humanity & Science M.Sc.Chem. D.H.E.	28	Mr. Birnale P. P. M.Sc.Chem.	3	Mr. Vhanmore D. B. B. E. Computer	4
Mr. Patil D. B. M. Tech. (Production) Workshop Superintendent	14	Mr. Ghodake K. S. M. A. (English) M.Phil	10	Ms. Ligade S. S. B.E. E & Tc	3
Mr. Patil R. B. M.Tech (Pursuing) Training & Placement, IIP, R & D	28	Mr. Bhokare A. A. B.E.	2	Ms. Mali V. B. B. E. E&Tc	2
Mr. Joshi D. G. M. E. Structural Engg.	24	Mr. Patil P. B. B.E.	2	Ms. Patil M. J. B. E. E&Tc	2
Mr. Datar S. S. B. E. (Elec.)	24	Mr. Patil S. P. M.Sc. Maths.	2	Mrs. Bavachkar S. G. B.E. Computer	4
Mr. Choudhari S. B. B.E.	21	Mr. Patil A. B. M.E. Structural Engg.	7	Mr. Langde P. S. M.E. (Pursuing)	2
Mr. Mench R. G. B.E.	19	Mr. Bhole N. B. M.E. Structural Engg.	3	Ms. Burse A. K. B.E.	3
Mr. Naroti M. S. M.E. (Pursuing)	16	Ms. Bhosale D. S. M.E. Construction Management	1	Mr. Talandage V. G. B.E.	2



LATTHE EDUCATION SOCIETY'S
POLYTECHNIC
JAIN MINORITY INSTITUTE

P-41, MIDC. Kupwad, Sangli.
Phone: 0233-2644422, 2645022
Website: www.latthepolytechnic.com
Email: latthepolytechnic@gmail.com

COURSES OFFERED

Name of Course	Intake
Diploma in Civil Engineering	60
Diploma in computer Engineering	60
Diploma in Electrical Engineering	60
Diploma in Electronics & Tele. Engineering	60
Diploma in Mechanical Engineering	120

Approved by All India Council for Technical Education, New Delhi and Directorate of Technical Education, Mumbai and Affiliated to M.S.B.T.E. Mumbai.

