



**POSTGRADUATE
CERTIFICATE PROGRAMME IN
CSR LEADERSHIP**

POSTGRADUATE CERTIFICATE PROGRAMME IN CSR LEADERSHIP

Jointly by **XLRI Jamshedpur**
and **Tata Steel Foundation**

A Unique Collaborative, AICTE Approved Programme
February 2025 - February 2026

Programme Directors:

Dr. Tata L. Raghu Ram
Dr. Kalyan Bhaskar

Expert Faculty on Social Impact:

Sourav Roy
and the senior leadership of
Tata Steel Foundation



TATA STEEL FOUNDATION

About Us.



XLRI - Xavier School of Management

Established in 1949 by Jesuit Fathers, XLRI- Xavier School of Management is India's oldest management institute. Committed to nurturing responsible global leaders for a sustainable future, XLRI has a history of pioneering initiatives for the greater good, embodying an enterprising and pioneering spirit. For 75 years, XLRI has diligently strived to stand up for actions and principles aimed at promoting the greater good. A key characteristic that sets apart XLRI students from other management schools is MAGIS - a quest for the best, never to settle down for mediocrity and always aspire to excel. They relentlessly strive for more, for something better than the best. Instead of wishing circumstances to change and become different, MAGIS-driven persons either make them happen or make the most of them; instead of waiting for golden opportunities, they turn all that they touch into gold.

Tata Steel Foundation

In order to recognise the shifts that will govern the next decade in the development space and to take forward our ambition of emerging as a thought leader of this space, the Tata Steel Foundation- a section 8 Company-was established in 2016. With over 1,500 members spread over ten units and six states of Jharkhand, West Bengal, Odisha, Uttar Pradesh, Maharashtra and Punjab, the Foundation is a community development implementing organisation focused upon co-creating solutions with tribal and excluded communities in order to address their development challenges. In FY24, the Foundation reached 4.77 million lives through its consolidated programme portfolio effectively positioned under Impact Pathways on Public Health, Education, Livelihoods, Gender and Community Enterprise, Infrastructure and Tribal Identity, at a commitment of over 607 crores. It is committed towards playing a larger role in India's sustainable development as roadmap to achieving its vision to create 'an enlightened and equitable society where every individual realizes her potential with dignity'.

Introduction and Objectives

XLRI Jamshedpur, an institution of excellence, nurturing responsible global leaders for the greater common good and a sustainable future, and the Tata Steel Foundation, one of the most respected CSR implementation institutions in the world come together to offer an AICTE approved one year Postgraduate Certificate Programme in CSR Leadership.

Social responsibility is now an integral part of strategic business decision making, prompting an increase in demand for professionals with a well-grounded expertise in the social service sector. The PGCCSR programme is designed to empower the participants with both conceptual knowledge, skillsets as well as practical competencies relevant to end-to-end CSR implementation and reporting. Further, an immersive three-month internship would provide the participants to work on real time projects to gain experiential learning. The programme will be conducted through a virtual platform twice a week. To facilitate peer learning, the course includes a week of offline module at XLRI Jamshedpur campus.

Highlights of the Programme

- 1. Comprehensive Curriculum:** The programme covers both theoretical and practical aspects. Participants gain conceptual knowledge, develop essential skills, and acquire practical competencies for effective CSR implementation and reporting.
- 2. One-week Campus Visit:** One week of offline modules at XLRI Jamshedpur campus will enhance the learning experience and provide opportunity for networking and collaboration.
- 3. Three-month Internship:** This experiential learning allows participants to apply their knowledge and skills to real-time projects. This hands-on experience can significantly enhance their understanding and capabilities to conceptualize and implement CSR projects.
- 4. Flexibility:** The virtual platform used for the programme allows professionals to participate without the constraints of location, making it accessible to a wider audience.
- 5. Peer Learning:** The structure of the programme, including the virtual platform and the offline modules, encourages peer learning and collaboration among participants. This interaction can foster the exchange of ideas and best practices, enriching the overall learning experience.
- 6. Expert Faculty:** The programme boasts of faculty with expertise in both theoretical and practical aspects of CSR. It will significantly enhance the learning experience for the participants, providing them with valuable insights and guidance.
- 7. XLRI Alumni Status:** Upon the successful completion of the programme, candidates are awarded the esteemed XLRI Alumni Status, a recognition that signifies their affiliation with XLRI, Jamshedpur.

Programme Content & Credits

| COURSE TITLE | CREDITS |
|---|---------|
| Accounting and Finance for CSR Leaders | 2 |
| Development Economics | 2 |
| Public Policy and Business Strategy | 2 |
| Statistics and Analytical Tools for CSR Leaders | 3 |
| Methods for Social Research and Action(Qualitative and Quantitative techniques) | 2 |
| Business as Social Change Agent in the 21st Century | 3 |
| Measuring, Monitoring, Managing and Reporting Social Impact | 3 |
| Introduction to Social Entrepreneurship | 1.5 |
| Managerial Ethics and Sustainability | 1.5 |
| Technology in Social Sector | 1.5 |
| Leadership for Social Impact | 1.5 |
| Total Classroom Contact Hours | 23 |
| Internship on Real Time Projects for 3months* and an individual project report | 12 |
| Total Credits | 35 |

Session Schedule

Friday: 6:30 PM - 9:30 PM

Sunday: 3:00 PM to 6:00 PM

Pedagogy

The pedagogy of the course is eclectic and highly engaging with a mix of learning approaches such as lectures, case studies, videos, group discussions, group projects and interactive live sessions with eminent faculty and guest speakers.

Target Participants

The PGCCSR has specifically been designed for working professionals in public and private sectors, NGOs, CSR foundations and for those who aspire to work or transition to the social-impact leadership domain.

Selection Criteria

A profile-based selection process wherein academic and professional record, statement of purpose (SOP) and discussion with the faculty shall be considered. Preference shall be given to the participants working in the development sector with NGOs, Government, CSR Foundations and Consultancy firms.

Programme Fee

The total programme fee is Rs.3,00,000/-
The Fee is payable in 3 equal instalments of Rs.1,00,000/- each. The 1st instalment is payable upon registration in the programme, the 2nd and 3rd instalments are payable at the beginning of terms 2 and 3 respectively.

Application Process

Candidates are expected to submit only Online Application Forms to get admission into the **"Postgraduate Certificate Programme in CSR Leadership."**

Academic Calendar

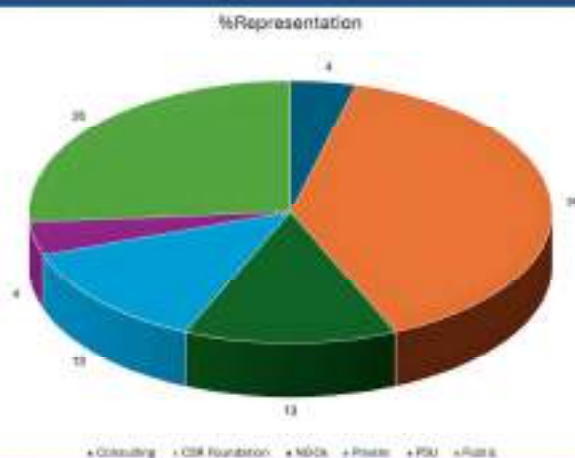
February 2025 to February 2026 (spread over three terms)
Term-1: Feb'25 to May'25
Term-2: June'25 to Oct'25
Term-3: Nov'25 to Jan'26

Eligibility Criteria

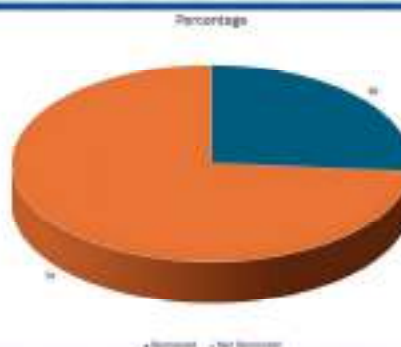
- A full-time, 3 or 4-year graduate degree from a recognized university or anything equivalent to graduation from a recognized degree granting authority.
- 4 years of full-time work experience after graduation.
- A decent level of mathematical/ statistical ability is required to follow the quantitative courses.
- Foreign nationals who have emigrated to India and are interested to do this programme need to produce an "Equivalency Certificate" issued by the Association of Indian Universities (AIU) to justify the relevance of their school leaving certificate / Diploma / Degree obtained in Foreign Institutions.

Student Profile Insights

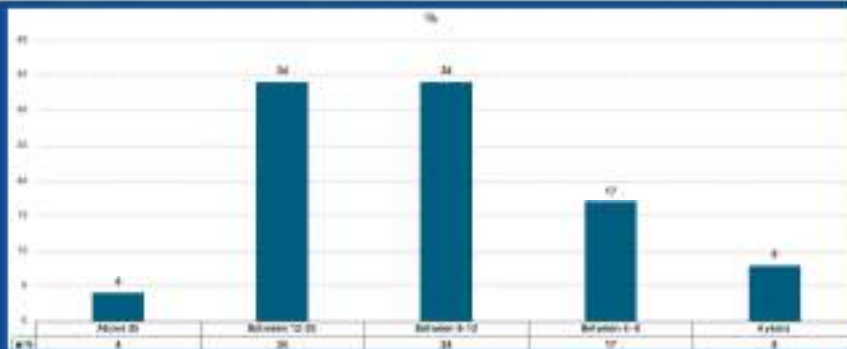
Sectoral Representation



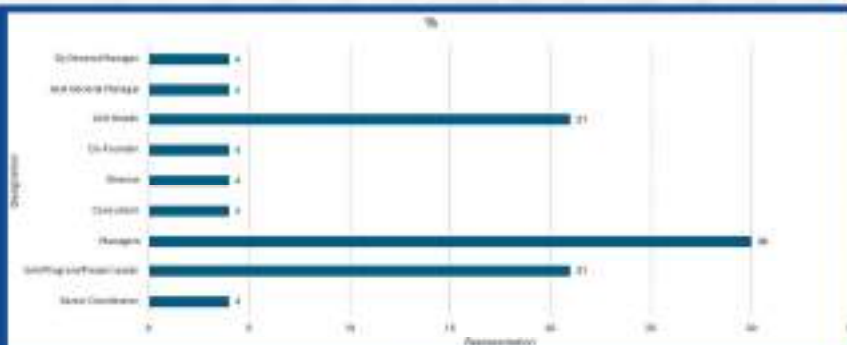
Sponsored Vs Non-Sponsored



Work Experience



Designation



Insights from the batch of 2024-25



M S Raju
Head – Executive Offices
Dr. Reddy's Laboratories Ltd.

As a student of XLRI's PG Certificate Course in CSR Leadership, I am thrilled to share my experience. The program, designed in collaboration with Tata Steel Foundation, is unparalleled in its depth and relevance. With India's pioneering CSR mandate, this course equips us with the essential skills to implement effective governance systems and drive meaningful change. The expertise of the faculty and the insights from TSF make it a standout offering. I highly recommend it to anyone passionate about making a real impact in CSR and leadership.



Anwesha Ambaly
Lead, Brand Management
Tata Steel Foundation

When I applied for the course in 2023, I had completed a decade in my career and had just moved into a higher position in my organisation. Enrolling into the course helped me develop a strategic mindset, enhance my leadership skills, and improve my thinking. Through the course, I got to know about the ongoing narratives and keywords in the development sector which opened my horizons to a great extent. The course was also a platform for networking as my peers belonged to diverse organisations that helped me gather industry insights and navigate complexities that we often face in the sector.



Major JJ Dominic
Head- CSR
Titan Company Limited

Here are 3 aspects of diversity which makes this program the most value adding:

1. The diversity of the curriculum, it gives a hands on exposure to subjects as diverse as Accounting to the play of Non Market Strategies, from Solow Models to application of Anova.
2. The diversity of the Modus Operandi, be it theoretical lectures, or the assignments or the live projects we need to drive.
3. The diversity of the classroom, from a senior executive from a public sector organisation, veterans from corporate CSR function/NGOs to a freshly passed out under graduate, the rainbow of perspectives the spectrum of such students brings in to the conversations.

Would strongly recommend this course to anyone who understands the undeniable need for science in the social sector as they take on crucial/impactful leadership roles in CSR function.



Name: Shwetanjali K
CSR Head
Siemens Healthcare Pvt. Ltd

I am confident that this program will equip me with the comprehensive knowledge, robust network, and strategic mindset essential to emerge as a thought leader in India's dynamic CSR landscape. The program's unique blend of real-world case studies and expert-led leadership development, under the guidance of renowned faculty, positions it as the ideal catalyst for my ambitions. I believe the program will empower me with both the conceptual framework and practical skills necessary for effective CSR governance and implementation.

Insights from the batch of 2024-25



Vipul Shukla
Consultant – Social Impact
Technology & Transformation
ET&P: Finance Transformation
Deloitte Touche Tohmatsu India LLP

I am Vipul, working as a Consultant- Social Impact at Deloitte. This Postgraduate Certificate in Corporate Social Responsibility and Leadership from XLRI, Jamshedpur, excels in its blend of theoretical knowledge and practical application. I loved how this course includes a focus on ethical strategic CSR, sustainability, and ethical leadership integration. It offers insights from industry leaders and real-world case studies, ensuring participants develop actionable skills to drive impactful CSR initiatives and lead responsibly in diverse corporate settings.



अशोकः सुब्रह्मण्यम् | Asok Subrahmanyam
(Retd) Deputy General Manager (HSSE)
Bharat Petroleum Corporation Limited

अथर्वण वेदा (Atharvana Veda) says that "One should procure wealth with one hundred hands and distribute it with one thousand hands". This makes the Corporate Social Responsibility – CSR a must for all business to contribute towards the socio economic development of the Nation in a sustainable manner. Indian Companies Act 2013 gave the lift for the CSR and Indian industry has taken it up seriously. The continual surge of Indian economy demands a focused approach for execution by corporates and business for meaningful, impactful and strategic CSR.

All business are looking forward to ways and means of utilising the CSR funds in terms of compliance as well as with the inner wish of returning back to the society what has been drawn. All these makes it paramount to have specialised CSR professionals who can take fill the vacuum and deliver the intended CSR vision. In this aspect, Post-Graduation in CSR offered jointly by XLRI (the renowned academic institute) and Tata Steel Foundation (well renowned industry leader in the CSR Space) is the need of the hour unique programme.

Being a student of the first batch of this course, I am immensely benefited by the knowledge acquired in the domain of Accounting and Finance for CSR leaders, Development Economics, Business ethics, Statistics and Analytical tools for CSR leaders and Methods of Social Research. Our Eighteenth (18 th) Lok Sabha has 48% of its Members of Parliament from Social Sector background evidences the possible thrust towards of Social sector development. This provides the platform for professionally qualified CSR leaders. Thus highly recommend this PG in CSR Leadership course to the youth of the Nation.

Programme Administration and Contact Details



DR. TATA L. RAGHU RAM

**Programme Director - Postgraduate Certificate
Programme in CSR Leadership, XLRI Jamshedpur**

**Chairperson of Father Arrupe Centre for Ecology & Sustainability,
Associate Professor of Strategic Management, XLRI Jamshedpur**

Email: raghutata@xlri.ac.in

Faculty Profile: www.xlri.ac.in/about/full-time-faculty/tata-raghu-ram



DR. KALYAN BHASKAR

**Programme Co-Director - Postgraduate Certificate
Programme in CSR Leadership, XLRI Jamshedpur**

Associate Professor of Strategic Management, XLRI Jamshedpur

Email: kalyanb@xlri.ac.in

Faculty Profile: www.xlri.ac.in/about/full-time-faculty/kalyan-bhaskar

Expert Faculty on Social Impact



SOURAV ROY

**Chief Executive Officer, Tata Steel Foundation
Chief, Corporate Social Responsibility, Tata Steel**



POSTGRADUATE CERTIFICATE PROGRAMME IN CSR LEADERSHIP

VLI Office: **06576653213 / 3272 / 3275 / 3333**

For Registrations: **vil.xlri.ac.in/course/pgc_csr_leadership/**

Long Term Programme: **vil.xlri.ac.in/long-term-courses/**